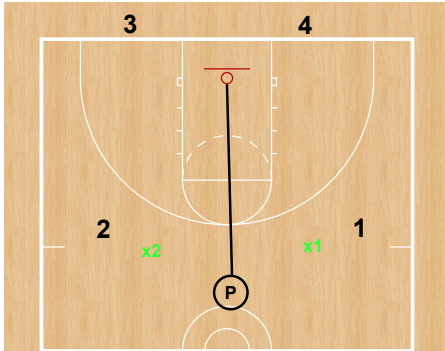
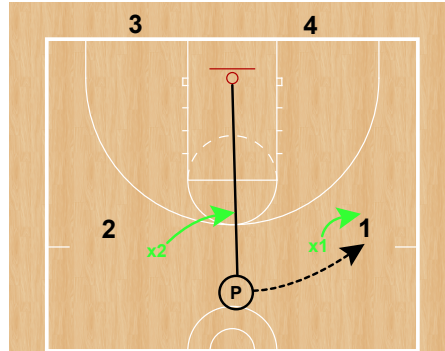


2v2 Deny/Midline



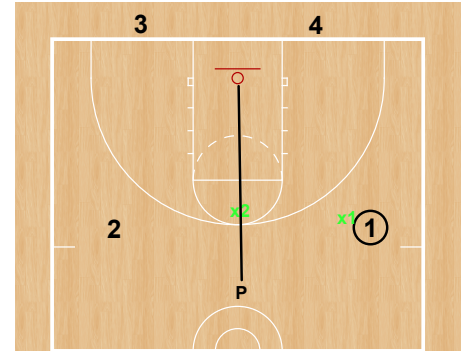
Basic Set Up

- Coach is Passer at Top of the Key
- x1 & x2 are Denying one pass away
- Black line represents "Midline" or "Rim line"

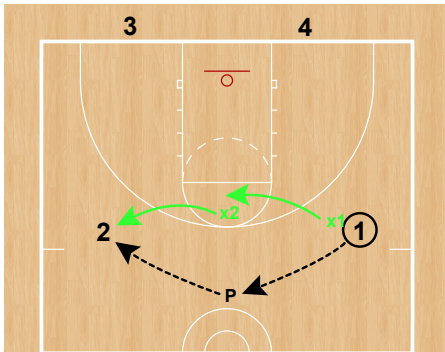


Basic Action

- On the pass to 1, 1 guards the ball and x2 Sprints to the midline



Basic Action Cont.



Basic Action Cont.

- A reversal pass through the Coach to 2 leads to x2 guarding the ball and x1 on the midline
- Rotate Defense to Offense, Offense Off, and Line to Defense after a few rotations

